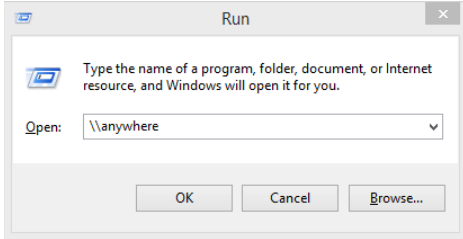
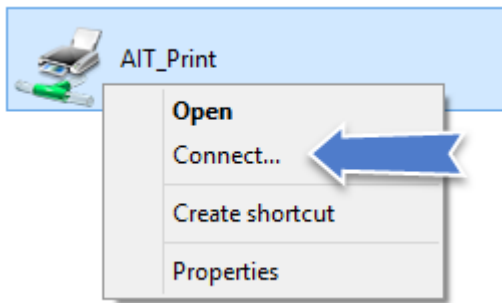


How to install printer driver.

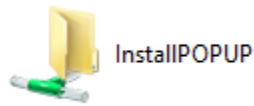
1. Go to Run (Press windows button + R at keyboard)
2. Type “[\\anywhere](#)”



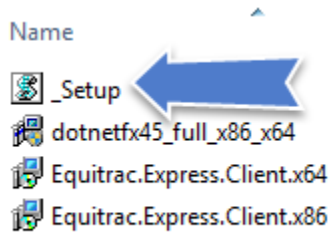
3. Right Click at printer driver “AIT_Print” and select connect



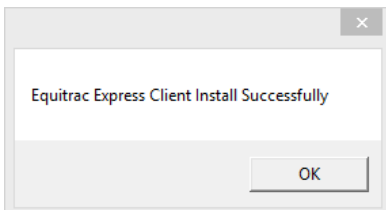
4. Go to “installPOPOP” Folder



5. DoubleClick “_setup”

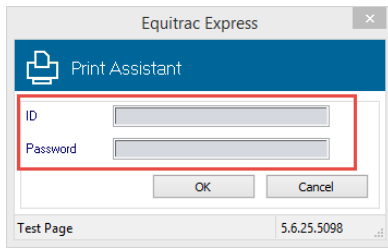


6. Waiting for installation until show this picture.



7. Test Print!

8. If after test print show Print assistant PopUp ,Input user and password same login to AIT Internet (If you can print ,Finish installation)



9. If after test print didn't show Print assistant PopUp ,
- Install .NetFX4.5 at "installPOPUP"
 - DoubleClick "_setup"
 - Test Print
 - If after test print show Print Assistant Popup ,Input user and password same login to AIT Internet (If you can print ,Finish installation)